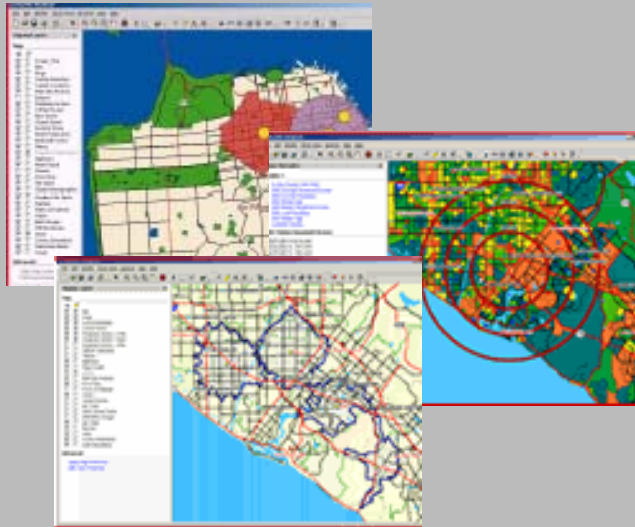


AnySite™ Analyzer v8.6 provides the fastest, easiest and most reliable desktop system of visualization technology for companies where location is critical to business success – retail, restaurant, real estate, and financial services industries. Since its original introduction in 1992, AnySite™ has been the software choice for businesses ranging in size from Fortune 500™ industry leaders to start-up companies just breaking ground. And now, AnySite™ is more powerful than ever before.

### Let AnySite™ Analyzer Drive Your Success In Location, Customer and Market Analysis

- Easy To Learn -
- Demographic Analysis -
- Presentation Quality Maps -
- Customizable Reporting -
- Superior Mapping Capabilities -
- Advanced Analytical Functionality -
- & Much More -



#### Recommended Components:

- Hardware:** 500 MHz or better with 64+ megs of memory
- Monitor:** 15" with graphics accelerator card, 16+ bit color  
- minimum of 800x600 resolution
- Storage:** Depends on geographic coverage
- Operating System:** Windows 2000, NT 4.0

**Open architecture** enables you to integrate the specific content you need from sources you prefer.

**Quickly, easily, and accurately** you can connect, retrieve, and report from your proprietary databases and analyze trade area data. In addition, Analyzer's built-in user security allows administrators to lock down access to sensitive data.

**Easily deployable** across a number of configurations including LAN, WAN, thin-client, and browser-based environments. Whether you need one seat or hundreds, AnySite™ Analyzer is the application of choice for location, customer and market analysis.

**Power Up to AnySite™ Analyzer** and you'll have dozens of enhancements and upgrades including Enhanced Batch Processor for sites and markets, Enhanced Package Editor for maps and report production *and*:

☒ **Multiple Site and Market Analysis** – Users can define multiple site study areas within a view with each site's geometric trade area uniquely defined. For example, trade areas defined geographically can easily identify where sister store trade areas overlap.

☒ **More Data For Your Dollar Analyzer** – ships with data and boundary files at the block group level *and* all higher levels of geography: census tract, ZIP Code, county and state. Optional levels such as DMA, MSA, Minor Civil Division/CCD, and carrier route boundary files are also available.

☒ **Enhanced Reporting Flexibility** – The Report Editor in Analyzer's Configurator allows users to pull data from any licensed database within the AnySite™ Data Engine (ASDE) *and* from any proprietary or third party data stored in Access, SQL, Informix and/or Oracle.

☒ **Enhanced Security Analyzer** – provides application administrators the ability to restrict, by user, access to integrated proprietary and third party databases. Furthermore, the application's security allows features and functionality to be accessible to a defined group of users.

For more information contact

DataSource Technology, Inc.  
1805 Arabian Avenue  
Naperville, IL 60565

(630) 416-9924  
[www.datasourcetech.com](http://www.datasourcetech.com)